



Designers' Choice

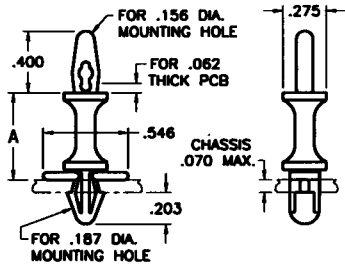
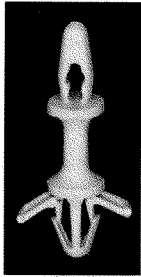
INSULATED PC SPACERS/SUPPORTS

- Easy snap-in assembly
- Designed for .062 thick PC boards and chassis
- Releasable for repairs

- Strong dependable grip
 - No tools required for installation
- MATERIAL:** Nylon, UL Rated 94V-0

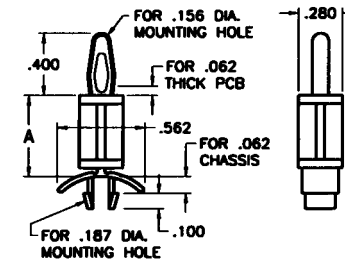
PC TENSION-FIT SUPPORTS

One end locks into chassis, the other end tension-fits into the PC board



| CAT. NO. | "A" DIM. |
|----------|----------|
| 1927A | .250 |
| 1928A | .375 |
| 1929A | .500 |
| 1930A | .625 |
| 1931A | .750 |
| 1932A | .875 |
| 1933A | 1.000 |

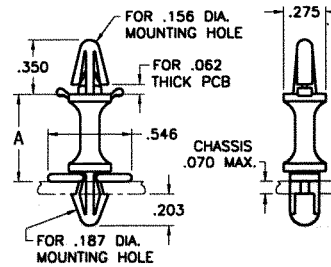
One end locks into chassis, the other end tension-fits into the PC board



| CAT. NO. | "A" DIM. |
|----------|----------|
| 8800 | .187 |
| 8801 | .250 |
| 8802 | .375 |
| 8803 | .500 |
| 8804 | .625 |
| 8805 | .750 |
| 8806 | .875 |

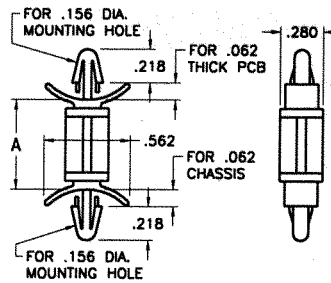
PC LOCK-IN SUPPORTS

One end locks into chassis, the other end locks into the PC board



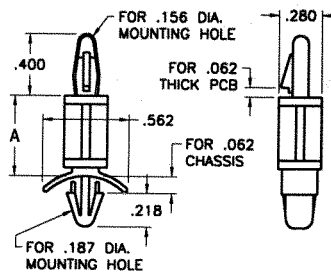
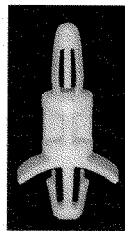
| CAT. NO. | "A" DIM. |
|----------|----------|
| 1927B | .250 |
| 1928B | .375 |
| 1929B | .500 |
| 1930B | .625 |
| 1931B | .750 |
| 1932B | .875 |
| 1933B | 1.000 |

One end locks into chassis, the other end locks into the PC board



| CAT. NO. | "A" DIM. |
|----------|----------|
| 8815 | .187 |
| 8816 | .250 |
| 8817 | .375 |
| 8818 | .500 |
| 8819 | .625 |
| 8820 | .750 |
| 8821 | .875 |

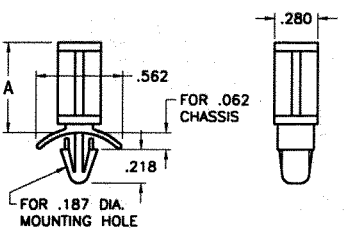
One end locks into chassis, the other end locks into the PC board with easy release lever



| CAT. NO. | "A" DIM. |
|----------|----------|
| 8807 | .187 |
| 8808 | .250 |
| 8809 | .375 |
| 8810 | .500 |
| 8811 | .625 |
| 8812 | .750 |
| 8813 | .875 |
| 8814 | 1.000 |

PC SPACER SUPPORTS

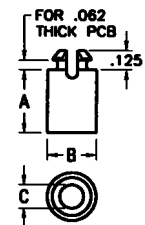
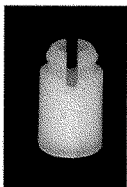
One end locks into chassis, other end supports the PC board



| CAT. NO. | "A" DIM. |
|----------|----------|
| 8822 | .187 |
| 8823 | .250 |
| 8824 | .375 |
| 8825 | .500 |
| 8826 | .625 |
| 8827 | .750 |
| 8828 | .875 |

STACKING SPACERS

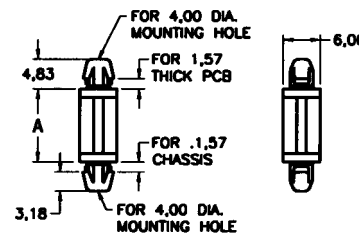
Self-aligning and self retaining. Designed for stacking multiple levels of PC boards. Available for use with #4, #6 & #8 size screws.



| CAT. NO. | "A" DIM. | "B" DIM. | "C" DIM. | MTG HOLE | SCREW SIZE |
|----------|----------|----------|----------|----------|------------|
| 8829 | .125 | .260 | .125 | .187 | #4 |
| 8830 | .187 | .260 | .125 | .187 | |
| 8831 | .250 | .260 | .125 | .187 | |
| 8832 | .375 | .260 | .125 | .187 | |
| 8833 | .500 | .260 | .125 | .187 | |
| 8834 | .625 | .260 | .125 | .187 | #6 |
| 8835 | .250 | .312 | .153 | .234 | |
| 8836 | .375 | .312 | .153 | .234 | |
| 8837 | .500 | .312 | .153 | .234 | |
| 8838 | .625 | .312 | .153 | .234 | |
| 8839 | .250 | .312 | .169 | .234 | #8 |
| 8840 | .375 | .312 | .169 | .234 | |
| 8841 | .500 | .312 | .169 | .234 | |
| 8842 | .625 | .312 | .169 | .234 | |

METRIC PC LOCK-IN SUPPORTS

One end locks into chassis, the other end locks into the PC board



| CAT. NO. | "A" DIM. |
|----------|----------|
| 8843 | 3mm |
| 8844 | 4mm |
| 8845 | 6mm |
| 8846 | 8mm |
| 8847 | 10mm |
| 8848 | 12mm |
| 8849 | 14mm |
| 8850 | 16mm |
| 8851 | 18mm |

MATERIAL: Nylon, UL Rated 94V-2